

UNESCO-Norway Funded Project

Mapping of Cultural Assets

**District Multan &
Bahawalpur (Punjab)**

CONTRACT NO. 413/09

**END-OF-ASSIGNMENT
REPORT**

30 APRIL 2010



PERVAIZ VANDAL & ASSOCIATES

Head Office: 43-G, Gulberg-III, Lahore, Ph: 042-5880822, Fax: 042-5487651, Off. Mob: 0300-8486349
Field Office: 4-A, Telephone Exchange Area, Satellite Town, Bahawalpur. Off. Mob: 0333-6420525
Field Office: Street no:1, New Shadab Colony, Opp Tubewell Workshop, Bararan Road, Multan
email: pva43g@yahoo.com

1. BACKGROUND

Pervaiz Vandal & Associates (PVA) was awarded the project “Mapping of Cultural Assets in the District Multan and Bahawalpur” on the 29th of April, 2009 (Contract No. 413/09). The Project was within the framework of UNESCO-Norway funded project, “Mapping of Cultural Assets in NWFP”, and thus it was stipulated that the Project in Punjab would be “in keeping with the process prescribed by UNESCO for NWFP”. The Work Plan submitted outlined the various stages; comprising four components, that is a survey to map the tangible and intangible cultural assets in at least 15 villages each in the two districts using the UNESCO developed form; entering data in the GIS Map and developing the GIS Database; developing a strategy for safeguarding and promoting cultural assets, identifying projects with costs; and developing promotional material.

In accordance with the contractual obligations, reports were regularly sent to UNESCO which included the Inception Report (June 2009); First Progress Report (August 2009); Second Progress Report (14 Dec 2009). In addition two other reports dispatched were “Rapprochement of Cultures: the Multan & Bahawalpur Culture Dialogue” (April 2010) and “Safeguarding Cultural Assets & Future Projects” (April 2010). The End-of-Assignment Report herewith closes this assignment.

2. AIMS AND OBJECTIVES OF THE PROJECT

Broadly the Project had four Aims

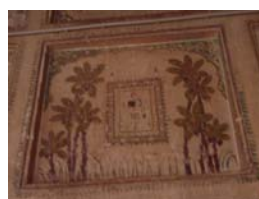
1. To develop a database of the communities cultural assets (tangible & intangible) of selected villages in the two districts
2. To prepare the database in a user friendly and expandable retrieval system
3. To create a nexus between culture and development and harness culture to provide economic opportunities for communities
4. To prepare promotional material for awareness building in general public, specially for intergenerational transfer of cultural knowledge



Potter in Multan

the

The Project TORs are attached as *Annex 1* “Project TOR & Outcome”



Fresco, Shrine of Zainul Abadeen



Customs & Rituals



Shrine of Raja Qattal, Jalalpur Pirwala

3. STAGES OF WORK, OUTPUTS AND OUTCOMES

Table 1 below encapsulates the Project components with outputs and outcomes. These cover the salient features of the Work Plan

TABLE 1: REPORTING PERIOD (MAY 2009-APRIL, 2010)

END-OF-ASSIGNMENT REPORT		Time in Months			Assessed against Original Work Plan	
S.N	Action	May-09	to	Apr-10	Remarks	Deviations
REPORTING						
i)	Inception Report	Submitted 29 April 2009			Achieved on time	None
ii)	First Report	Submitted August 2009			Achieved on time	None
iii)	Second Progress Report	Submitted 15 December 2009			Achieved on time	None
iv)	End-of-Assignment Report	Submitted April/May 2010			Delayed by 2 weeks	Delayed 2 weeks
ADDITIONAL REPORTS						
v)	Reapproachment of Cultures: the Bahawalpur & Multan Cultural Dialogue	Submitted April 2010			Conference Organized in each district as final public meeting with stakeholders	Additional Achievement
vi)	Safeguarding & Future Projects	Submitted April 2010			Report based on Findings of Mapping in both districts	Additional Achievement
TRAINING AND COLLABORATION WITH STAKEHOLDERS						
1	Stakeholders collaboration	Achieved. Several meetings held in both Districts through the duration. Awareness and Collaboration Achieved. Joint events with local organizations held				None
2	Training	Achieved. Training workshops held. 15 persons fully trained & capable of replicating				None
FIELD SURVEY & DATA ENTRY						
4	Field Survey	Bwp :— Tangible assets, —intangible assets Multan : —tangible assets, —intangible assets Requisite Villages Surveyed in each district=15				None
5	DATA ENTRY AND GIS DATA BASE	All Field Data Forms Entered in GIS System for each district				None
PUBLICATIONS FOR DISSEMINATION /PROMOTION AND ADVOCACY						
6	Preparation of Written Material				Prepared & distributed to Stakeholders (pamphlets etc.)	None
7	DVD " River Songs of the Mors"				Despatched to UNESCO, Islamabad	
STRATEGY AND FUTURE PROJECTS						
9	Report Strategy & Future Projects	Based on Findings of Mapping			Submitted in April 2010	None

4. THE COMPONENTS

The Project comprised of 4 main components

- a) Training & Collaboration with Stakeholders
- b) Field Survey & GIS Database
- c) Publications for Dissemination, Promotion & Advocacy
- d) Strategy and Future Projects

The salient aspects of each covered in the Project are delineated below

a) TRAINING & COLLABORATION WITH STAKEHOLDERS

Training of Field Staff was an ongoing process through the duration of the Project as new issues were confronted and resolved. The training module comprised of the following

- i) Training in Filling in the Designated Forms to assure quality
- ii) Sensitization of Culture
- iii) Training in GIS Data entry and GIS Database
- iv) Review of on-going work

During this period, PVA personnel attended the UNESCO organized workshop in Islamabad from 3 Nov to 5 Nov 2009. This was followed by workshops with the field staff in GIS in Bahawalpur.



Training Workshop 8 June 2009



On-Site Training 10 June 2009



Training Workshop



Training

TABLE 2: TRAINING DURING PROJECT PERIOD

Heads	Type of Training	Dates	Outcomes	
Field Survey, GIS, Data Entry	Introduction to Project Training in Mapping & GIS	9-10 June, 2009	Conducted jointly by UNESCO GIS Expert and PVA Core Team, the training through presentations, field exercises and interactive sessions laid the basics of the Project. Selection of Field Surveyors.	
	Follow on Training in Mapping	21-22 June, 2009	Onsite Issues resolved	
	Assessment of Assets (archeological)	2-5 July 2009	Training in identification of Archeological Sites	
	Assessment of Assets (built)	2-12 July, 2009	Training in identification of Built Heritage & Intangible Heritage.	
	Photographic Recording Procedures	2-12 July, 2009	Skill Development in Photographic procedures	
	Review Training	29-30 July 2009	Recap of procedures, tangible and intangible assessment of assets	
	Refresher Filling in the Designated Forms	24-27 Oct, 2009	Recap of procedures, tangible and intangible assessment of assets	
	GIS Training		2009 August	Entering into GIS Data. Review by UNESCO GIS team
			3-5 Nov, 2009	Refresher GIS Data & Spatial Analysis, organized by UNESCO in Islamabad
		22-25 Nov 2009	Entering GIS Data and Spatial Analysis	
Sensitizing on Culture	Identifying Historic Eras and significant aspects of the intangible culture	8-9 June, 2009	Enhancement of interaction with communities Skill development	
	Archeological Sites as an Asset of Communities	23-26 June, 2009	Skill Development	
	Aspects of Tangible and Intangible Assets	4-8th July, 2009	Skill Development	
	Peoples history & Culture. Significant expressions of the intangible & material culture.	29-30 July, 2009	Skill Development	
	Mapping & Importance of the Storytelling and oral expressions	8-13 Dec, 2009	Skill Development	
	Understanding a Unique Cultural Group & its Assets	February	Deep Cholistan, Field Training	

OUTCOME

1. Twelve persons trained in districts in GIS and Mapping including 3 women
2. Large Number of people sensitized and received basic training.
3. Database team trained in Head Office
4. Master trainers available in both districts for upscaling Project

COLLABORATION WITH STAKEHOLDERS

Collaboration has been a key to our mapping work in the Districts. This was an ongoing effort throughout the duration of the Project and good links have been established with several representatives from the private sector and the local universities. Periodic meetings were held in which the stakeholders were apprised of the interesting findings and they were asked to comment and provide insight and directions for further work. Very early on in the Project it was felt that a joint program should be identified since it would not only create a focus but also provide an opportunity for active stakeholder participation. Planning for such a program was carried out step by step, various options were explored and nearing the end of the Project a public event was held at both Bahawalpur and Multan. This was titled “the Multan (Bahawalpur) Culture Dialogue: Sharing and Collaboration Amongst Stakeholders” and the conference titled “People and Memories” which was later broadened in response to UNESCO Year of Rapprochement. These were collaborative events with the Bahauddin Zakriya University (BZU) at Multan and an NGO Saraiki Abdi Majlis at Bahawalpur. (See Report *Annex 7*)



Meeting with Stakeholders –PTDC July 2009



At the Dept. of Fine Arts, IUB September 2009

The Objective of these events was to bring together on a common platform the opinion makers and the citizens in the district headquarter and through deliberations around a common agenda bring Culture into the forefront as a means of promoting peace and harmony amongst people through appreciation of cultural diversity in a predominantly Saraiki speaking area. The events facilitated the advocacy and promotion of cultural assets as identified through the Mapping Project; and engendered a sense of pride and identity in the participants and the people of South Punjab. The theme

“People and Memories” was selected as the title, because it was felt by all the partners that such a focus makes it easier for presenters and was a good way to move towards an understanding of cultural diversity represented through the different linguist and cultural sub-groups in the region.

The events were held on February 23, 2010 and March 29, 2010 in Bahawalpur and Multan respectively. The Report is annexed as *Annex 7*

OUTCOME

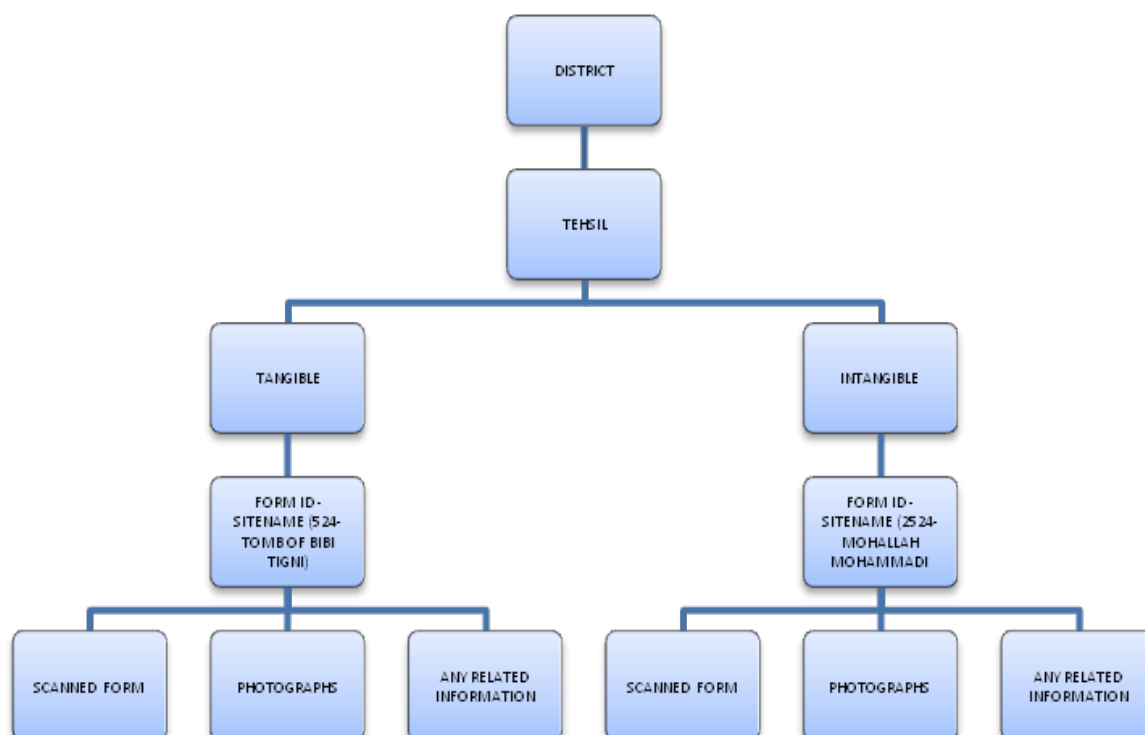
1. Greater Participation of Stakeholders in districts in the Project.
2. Greater Awareness and Appreciation of Cultural Mapping & its value
3. Interest of people to form local based groups for protection of cultural assets
4. Developing inclusive mechanisms resulted in good links with universities to carry further the Project’s aims and objectives

b) FIELD SURVEY AND GIS DATABASE

THE FIELD WORK for mapping cultural assets in both districts involved the Preparatory work followed by the Field Survey in the following steps

1. Selection of field teams and basic training
2. Identification of Villages which were known centers of the Tangible or Intangible Culture (Transferred on Lists shared with all concerned and stakeholders)
3. Planning out Movement of Field Teams (3 teams each for Bwp & Multan)
4. Identifying and meeting with Local Resource person(LRP) at start of work in each village
5. Rapid Walk through the village with LRP to identify tangible assets
6. Discussions with local people to list out intangibles to be filled in forms
7. Filling in Forms of Tangible and Intangible Assets
8. Check of all forms by respective Supervisors
9. Check by Field Work Coordinator
10. Transmittal of Forms to Data Entry Team (Via Hand disk sent through courier)

Format for Developing Database was developed as encapsulated in Chart below



The field work was closely monitored and issues identified were resolved quickly to ensure that information is correctly filled in and quality maintained. A sample of issues and solutions is given below

Issues Pertaining to Field Survey (Sample)

Issue	Solution
Lack of understanding of terminology	Handout 1: prepared for each survey team explaining terminology
Spelling Errors of English Text	Handout 2: List of Spelling prepared
Different Spellings Used for same word	A Chart developed & Displayed in Field Office and Sub-Field Office for all teams to use. Uniformity of Spelling expected
Common Mistakes noticed such as of Ethnic Groups	All teams informed that ethnic groups are not religious sects but “caste’ (<i>zath/patha</i>)
Age/Era Box incorrectly filled due to lack of knowledge of history	Training sessions held
Caption less photographs	Format for the captions of photographs for description with place name and date developed.
Field forms	The Field Survey Forms were divided into separate forms for tangible assets and intangible assets to resolve confusions arising in the field. This was done in consultation with UNESCO GIS Expert
Organizing Data in a systematic manner	A system developed (See data entry chart)
Other minor issues pertaining to forms	Resolved through training & communication with PVA experts

NUMBER OF VILLAGES SURVEY

The TOR required that at least 15 villages in each district are to be surveyed. The given unit of a village appeared problematic and it was decided that the work would be done on the basis of Tehsils which are clear administrative divisions with easily identifiable boundaries. Thus teams were sent to different parts of each District with the aim that a representative sample would be covered. In each of the tehsils the start was from a village which had been identified by local stakeholders and/or library research as a known locale of cultural assets which could be a craft or built heritage or music etc.

MULTAN DISTRICT survey is based on its six towns with the towns (kasbas) covered in each case, followed by selected villages on the periphery and in the rural hinterland. The total number of Villages/towns/ Kasbas mapped is 54 including quarters (mohallas) in densely populated areas such as Multan City

TABLE SHOWING THE VILLAGES MAPPED IN DISTRICT MULTAN

S. N	NAMES OF TOWN	VILLAGES	
1.	JALAL PUR TOWN	1. Khan Bella	7. Basti Sheikh Ismaeel
		2. Ali Pur Sadaat	8. Moza Khanu
		3. Ghazi Pur	9. Chack 82/M Basti Khuda Baksh
		4. Karam Ali Wala	10. Hafiz Wala
		5. Kotla Chaker	11. Basti Behli Sharif
		6. Umerpur	12. Basti Dewala
2.	SHAH RUKN -E-ALAM TOWN	1. Shah Rukn-e-Alam Town City	5. Loother
		2. Jhooke Lashker Pur	6. Tattay Pur
		3. Makhdoom Rasheed	7. Sayedpur
		4. Budhla Santt	8. Sorajmiani
3.	BOSAN TOWN	1. Qadir Pur Ran	5. Alamdi Surrah
		2. Bosan U.C.64	6. Bosan Town City
		3. Salah Mahay	7. Gulgisht Colony
		4. Binda Sandeela	8. Basti Laber
4.	SHER SHAH TOWN	1. Sher Shah Town City	6. Kotla Toley Khan
		2. Hamid Pur Kanoora	7. Aminbad
		3. Qasba Sani	8. Bajje Wala
		4. Laar	9. Tibbi Sher Khan Wala
		5. Rangeel Pur	
5.	MUMTAZ ABAD TOWN	1. Mumtaz Abad Town City	6. Khan Pur Marral
		2. Said Pur	7. Nawabpur
		3. Basti Malook	8. Moza Balochan
		4. 18-M / R	9. Lakhi Wala
		5. Mumtaz Abad U.C.84	10. Chah Said Wala
6.	SHUJA ABAD TOWN	1. Shuja Abad Walled City	6. Noushehra Panjani
		2. Sikendar Abad	7. Bulel
		3. Kotli Nejabat	8. Gardezpur
		4. Jalal Pur Khakhi	9. Chanbi Wala
		5. Jhallan Wala	10. Moza Jhakar
TOTAL VILLAGES/TOWNS/KASBAS		54	

BAHAWALPUR DISTRICT mapping represents all tehsils and total as 65 village/kasbas/mohallas.

During the Bahawalpur mapping, the team was able to record some songs of the riverside tribes along the Sutlej and it was decided that a team would be dispatched to map tribes along the riverside. A unique cache of intangible assets were mapped, a selection of which has been produced as a DVD. In Bahawalpur district it was also decided to go into Deep Cholistan since the periphery villages had revealed such unique and exquisite assets it was felt that the more remote parts would perhaps be important to record. (See The Strategy Report -Part 1: Findings of the Project). The Table below encapsulates the villages mapped during the Project

TABLE SHOWING THE VILLAGES MAPPED IN DISTRICT BAHAWALPUR

S.N	NAME OF TEHSIL	VILLAGES/TOWNS/KASBAS	
1.	BAHAWALPUR	1. Tibbi Sohagan	7. Eid Gaha
	CITY	2. UC 6	8. Bohar wala
		3. Mohalla Nawaban	9. Baghdad station
		4. City 12	10. Mahajer Colony
		5. Himaitiyan	11. Maqbool Colony
		6. Malook Shaha	12. Sadiq Colony
		ABBAS NAGAR	1. Dera Bhakka
		2. Basti Pehoran	5. Basti Ghaden
		3. Riazbad	
	KHANQAH SHARIF	1. Moza Nehar wali	5. Pathen wala
		2. Basti Mian Sahib	6. Samma Satta
		3. Khanqaha sharif	7. Noorpur
		4. Basti Luqman	8. Basti Sanjrani
	MUBARIKPUR	1. Mubarakpur	3. Basti Sadibad
		2. Station	
2.	AHMEDPUR EAST	1. Basti Usmanpur	
	CITY	2. Bandel	
	UCH	1. Uch Gillani	2. Uch Mughlan
	JANU WALA	1. Moza Bakhtiari	
3.	YAZMAN	1. Yazman City	3. Chandni Chowk
	CITY	2. Basti Mirana	
	HEAD RAJKHAN	1. 36 DNB	3. Bhel Nagar
		2. 111 DNB	4. 24 DB
	MOAJ GHAR	1. 104 DB	3. 140 DB
		2. Kher ser	
	DERAWAR	1. Chip wala	5. Riyasti wala
		2. Run wala	6. Kalian paran
		3. Ganweri wala	7. Prehar wala
		4. Azeem wali ther	8. Derawer
4.	KHAIRPUR TAMEWALI	1. Jeevan Peer	4. Jindu shahi
	CITY	2. Mohalla Jamani	5. Chack 24
	BEHLI	3. Basti Magera	
		1. Behli Village	2. Ghanipur
5.	HASILPUR	1. Basti Gazer	3. Jamalpur
	CITY	2. Norpur	4. Arfat Colony
	QAIMPUR	1. Chona Wala	3. Basti Lal Shah
		2. 77 Fateh	
TOTAL VILLAGES/TOWNS/KASBAS			65

DATA ENTRY IN GIS DATABASE

This involved the following stages

- i) Checking Data Received for Quality Control
- ii) Discussion on Filled in Forms with UNESCO GIS Expert in
- iii) Sorting Data files for Preparing files for entry in GIS Base
- iv) Entering Coordinates from all data forms to GIS Base
- v) Attaching Files to Specific Data

Total Number of Forms entered for Bahawalpur District is 256 (Tangible-130, Intangible 126) and for Multan District 232 (Tangible-137, Intangible 95).

INFORMATION DRAWN & ANALYSED FROM GIS DATABASE

The Database other than the Coordinates of each location where cultural assets have been mapped can also be used to collate and analyze information in a fairly simple way. This becomes most useful for Development and/or Research Projects. In the words of some stakeholders there is already enough information in the database to take it to the Documentation stage or carry out research in a variety of subjects for which baseline information is now available. As an example, three Tables have been annexed pertaining to aspects covered in the database. See "List of Built Assets in district Bahawalpur: sourced from database forms" *Annex 4*; List of Built Assets in district Multan: sourced from database forms" *Annex 5*; and "Table Showing Existing Craft Knowledge in a Selection of Villages Mapped in District Multan & Bahawalpur: sourced from database" *Annex 6*

Since the TORs required that a Strategy for Safeguarding Cultural Assets and develop future projects, such tables collating mapped information were prepared by PVA Core team.

c) PUBLICATIONS, PROMOTION AND ADVOCACY

Advocacy, Publication and Promotion were interlinked activities which were carried out throughout the Project period.

- i) **ADVOCACY** focused on raising awareness amongst stakeholders and communities, safeguarding of cultural assets both the tangible and intangible. This was achieved through focus group discussions with stakeholders and at some schools, as well as one to one meetings with opinion makers. The District administration was also brought into the loop.
- ii) **PUBLICATIONS & PROMOTION** material was prepared as handouts and a brochure explaining the concept of Cultural Mapping which were widely distributed and made available in the field offices.
- iii) A DVD/Video had also been prepared and dispatched to UNESCO-Islamabad for dissemination. This is a selection of eight river songs of the Mors of the Sutlej.

Sung in Saraiki by Saber Hussain Mor and Nazir Hussain Mor and subtitled in English (translation by Prof. Zafar Ali Khan), the video acknowledges the rich intangible assets of the districts. The DVD carries the text, as below, to highlight the Project as well as create appreciation for an immensely rich but untapped cultural resource. It would be worthwhile for UNESCO to consider developing similar material from the available cache of mapped intangible assets

RIVER SONGS OF THE MORS OF RIVER SUTLEJ

The Songs in this album are from the repertoire of the Mors, an ancient tribe inhabiting the riversides of the great rivers of the Punjab. The Mors claim descent from the Melluhas, the tribe identified by some scholars as the people of the Indus Valley civilization. The Mors have traditionally earned their livelihood from the rivers as boatswains, fishermen and through making products from the material obtained from the riverside such as reeds for baskets, floor coverings and also the cloth *rillis* (appliqué bed covers) The selection of songs constitute the intangible assets of the Mor community, collected during the Mapping of District Bahawalpur and Multan. The repertoire is varied with *loories* (lullabies); *dohras* (couplets) and river songs as well as mythical stories and folklore. The selections for this album are some of the river songs which the Mors of the River Sutlej have been singing from generations. They are in the local language, Saraiki, and have evolved and may have been adapted over the years to include aspects of the Saraiki culture and the verses or invocation to the region's premiere Sufi poet and philosopher Khawja Ghulam Fareed. Some of the songs lament the drying of the rivers, the Hakra which is reputed to have dried in circa 1500 BCE and lately the Sutlej which is now without water, depriving the Mors of their livelihood and culture.

- iv) Conference "Rapprochement of Cultures: The Multan (Bahawalpur) Cultural Dialogue" was held as an awareness raising, promotion and collaborative activity, as described in 3-b above and attached as *Annex 7*

d) STRATEGY AND FUTURE PROJECTS

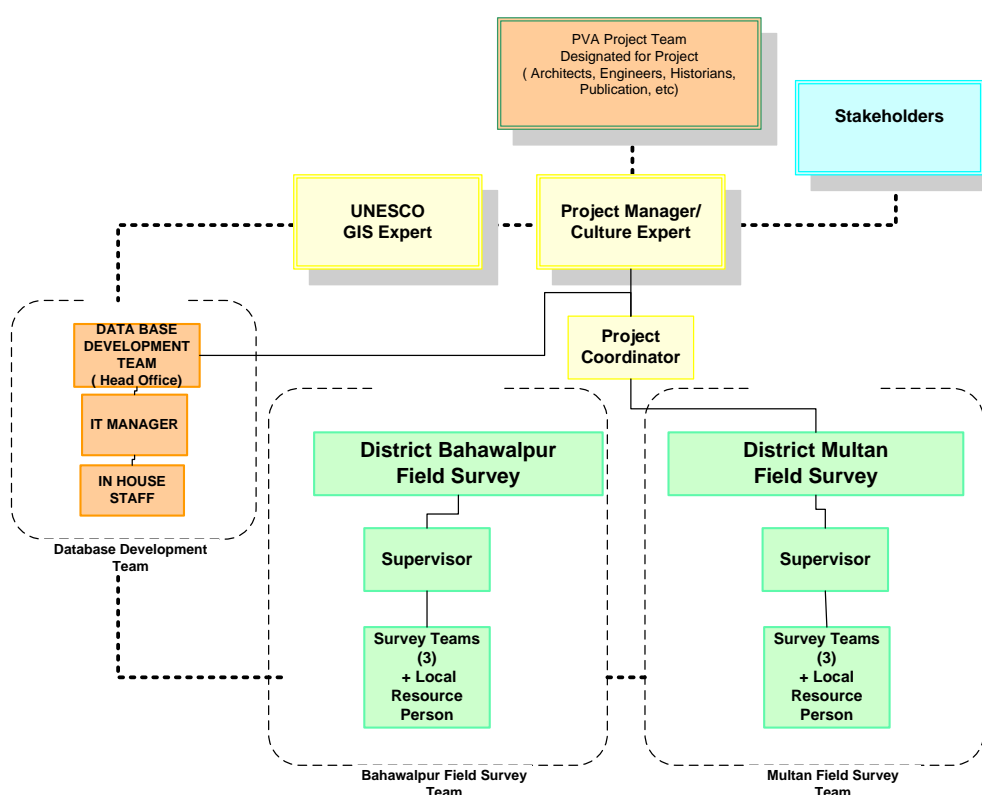
Considering that this constituted an important stage of how the usefulness of Cultural Mapping could be demonstrated to the communities, the PVA core team started preparing for it from inception. Team members was assigned tasks which would provide an analytical view of various aspects, one such report is the Situational Analysis for the Craft Sector in the two districts which was prepared by PVA Culture Resource Person (Crafts), the Resource Person (Built Assets) prepared relevant material, similarly PVA historian and archeologist prepared their inputs.

The Report "Strategy for Safeguarding & Promotion and Future Projects is attached as *Annex 8* It covers the following sections

1	Introduction	-Background & Methodology -Contextual Information of Districts Multan & Bahawalpur
Part 1	Findings of Project	-District Multan & Bahawalpur Assets
Part 2	Strategy & Future Projects	-The Proposed Framework -The Projects Projects & Cost Estimates
	Annex	

5. MANAGEMENT SYSTEMS AND QUALITY ASSURANCE

The following management system, as proposed, was made operational which envisaged the setting up of two field offices in the districts with field staff headed by a Field Coordinator. The Database was maintained in the Head Office and developed by trained staff. The Chart below delineates Management System set up for the Project



ORGANIZATIONAL CHART FOR PROJECT IMPLEMENTATION

1. A format for the internal reporting system for all team members was developed, including for Field Supervisors, Field Coordinator.
2. Field Coordinator reported weekly on progress to PVA head office
3. Data from Field was transferred to HO on External Hard Disk through Courier

4. Quality Check at 5 levels (Supervisor, Field Coordinator, Database developers (HO), PVA Expert, oversight by UNESCO GIS Expert)
5. Information on Data received from field is maintained in HO on specified format
6. Frequent visits were made to the field offices and villages by PVA experts to resolve problems and assure that mapping is result oriented.

QUALITY ASSURANCE MECHANISMS

QA mechanisms were built in during the testing stage. This was part of the training of the field team aimed at ensuring that the first level of information was correctly entered and truly reflective of the community's assets.

A Performa to assess the Data for quality check was developed by the database team. A sample is annexed for reference. (*See Annex 2*). Additionally frequent visits were made by PVA Core team members who were required to submit a report after each visit to enable identification of any problems/issues immediately. (*See Annex 3*) Joint meetings with all teams from both districts were also held periodically to keep all team members on track through sharing experiences. The Supervisors were also invited to the Head Office and dedicated training sessions were held with them for transfer of knowledge on the GIS system. PVA endeavored that the teams should be made fully aware of procedures as well as achieve a greater understanding of culture and cultural assets.

6. EXIT STRATEGY

- a) Reports that have been dispatched to UNESCO Islamabad each contain recommendations regarding various aspects of the Project, focusing on upscaling, expanding and deriving projects to link culture to development.
- b) Master Trainers are available in both districts
- c) GIS Database is ready for transference to UNESCO approved/designated center. At Lahore the possible locations can be UNESCO-Department of Archeology(GoPunjab) Documentation Center at Lahore Fort.
- d) It is also recommended that UNESCO may consider setting up a center in South Punjab or at the district level where a lot of interest has been generated and universities are keen to set up a data/documentation center. In Multan it can be handed over to Saraiki Area Study Center (SASC) of Bahauddin Zakariya University (Contact person Dr. Alamdar Hussain Bokhari; Tel 03216027046; email:departmentofsaraiki@gmail.com). At Bahawalpur it can be established at Saraiki Center, Islamia University Bahawalpur (Contact Person, Dr. Nasarullah Nasar Khan, Tel 03009682568)

ANNEX

1.	Terms of Reference & Outputs
2.	<i>Sample</i> Quality Control Performa
3.	<i>Sample</i> Field Visit Report-PVA Core Team Member
4.	Consolidated List of Tangible Assets (District Multan)
5.	Consolidated List of Tangible Assets (District Bahawalpur)
6.	<i>Sample</i> Table Showing The Existing Craft Knowledge in a Selection of Villages Mapped in District Multan & Bahawalpur
7.	<i>Report</i> : Conference on Rapprochement of Cultures (attached under separate cover)
8.	<i>Report</i> : Strategy & Future Projects (attached under separate cover)

ANNEX 1: TERMS OF REFERENCE AND OUTPUT

	TERMS OF REFERENCE (Contract 413/09 of May 2009)	OUTPUT/ACHIEVEMENT
i.	Submit to UNESCO Islamabad by 2 May 2009, a work schedule based on the selected proposal prepared by PVA	Achieved
ii.	Establish two field teams, simultaneously for data collection, led by a Project Coordinator, engaged by the Contractor	Achieved
iii.	Adopt the UNESCO format for data collection, already being used in NWFP, and work under direct guidance of the GIS expert engaged by UNESCO	Achieved. <i>Under UNESCO GIS Expert oversight and training</i>
iv.	Identify 15 villages per district for data collection and data entry in districts Multan and Bahawalpur (Punjab)	Achieved
v.	Initiate, guide and supervise the process of data collection and ensure timely delivery of data to the GIS expert, engaged by UNESCO and submit the inception report to UNESCO by 30 June 2009 at the latest.	Achieved
vi.	Liaise with the local governments to ensure participation of key members of the team in related training workshops organized by UNESCO in other districts; and organize related areas in Multan and Bahawalpur (Punjab)	Achieved
vii.	Submit quarterly progress reports to UNESCO Islamabad, with suggestions for pilot initiatives to demonstrate the value of cultural mapping	Achieved
viii.	Oversee the establishment of a GIS database in Lahore, for cultural assets of the Punjab and ensure its conformity with UNESCO system being followed in NWFP	Database ready for transfer. Master Trainers available for transfer of knowledge
ix.	Develop informative/promotional materials to underscore the concept of cultural mapping and its impact on development and empowerment of local communities through preservation and promotion of cultural heritage	Achieved. See Section 4-c and DVD despatched separately
x.	Establish a mechanism for monitoring and evaluation	Achieved. See Section 5 & 4
xi.	Prepare an action plan for the preservation and promotion of cultural assets of the Punjab, with list of activities prioritized and budgeted as part of fund-raising strategy and sustainability of the Norway-funded initiative	Achieved. See Section 4-d And Annex 8
xii.	Work out an exit strategy in consultation with UNESCO and other stakeholders for upscaling the sustainability	See Section 6. Database ready for transfer to Lahore-DC; BZU & IUB
xiii.	Submit a final report on the project to UNESCO Islamabad by 15 April 2010, at the latest, highlighting problems encountered, findings emerging during the mapping process, and recommendations for scaling –up/replicating the model in other parts of the Punjab	Submitted. Delayed by 2 weeks

**ANNEX 2
SAMPLE**

BAHAWALPUR- Quality Assurance Performa									
N	Location	Form No.	Date Received	Tangible	Intangible	STATUS		Observation	Update
						Complete	Incomplete		
1	Bwp	1						Site is archaeological but information is missing	complete information received on 4 August, 09
2	Ahmedpur	2							
3	Ahmadpur	3							
4	Ahmedpur	4							
5	Ahmedpur	5							
6	KPT	6							
7	KPT	7							
8	KPT	8							
9	KPT	9							
10	KPT	10							
11	KPT	11							
12	KPT	12							
13	KPT	13							
14	KPT	14							
15	Ahmedpur	16							
16	Ahmedpur	17							
17	Ahmedpur	18							
18	KPT	19	21-Jul-09					site name is missing	complete information
19	KPT	20	4-Aug-09						
20	KPT	21	4-Aug-09						
21	KPT	22	4-Aug-09						
22	KPT	23	4-Aug-09					Square ft area is missing	complete information received on August 17, 09
23	KPT	24	4-Aug-09						
24	Yazman	26	17-Aug-09						
25	Yazman	27	17-Aug-09						
26	BWP	28	17-Aug-09						
27	BWP	29	17-Aug-09						
28	BWP	30	17-Aug-09						
29	Yazman	31	17-Aug-09						
30	Yazman	32	17-Aug-09						
31	Hasilpur	33	31-Aug-09						
32	Hasilpur	34	31-Aug-09						
33	Hasilpur	35	31-Aug-09						
34	Hasilpur	36	31-Aug-09						
35	Hasilpur	37	31-Aug-09						
36	Yazman	38	31-Aug-09						
SUB-TOTAL				27	9	36	0		

Annex 3

Sample Field Visit Report

Visit of the Field Survey Review Team (FSRT)

A field survey review team – FSRT, visited the city of Bahawalpur and the Project Field Office. The team reached Bahawalpur on the 2nd of July 2009.

Project Field Office

The team reviewed the workings of the project field office. Mr. Zahid and Mr. Zameer briefed the system of data information entry for the documentation of the Cultural Mapping Forms.

Data Entry System

PVA associates from years of conservation experience have developed a much efficient data entry and information retrieval system. The appointed field survey teams have managed to implement this data entry system with efficiency and are extremely comfortable in using this user-friendly system.

This system is based on managing individual folders for each of the identified villages in a particular District, in this case Bahawalpur District. These main village folders then contain subfolders for every tangible and intangible heritage of that village which has been recorded by the field survey teams. This subfolder is named according to the GIS Form number plus the name of the identified structure, in case of a tangible, or the name of the place, for the intangibles.

Each of these subfolders comprises a comprehensive data regarding the relevant form. These subfolders include photographic documentation, any documented video and or audio regarding that form and any other additional information such as archival record, maps, architectural drawings and personnel's contacts.

(in simple words

main folder <BWP District> - Tehsil or Village sub folder <Ahmadpur Sharkia> - forms subfolder <form ID with the place name> - data subfolder <photographs and any other information>

one tehsil or village subfolder can have more than one form folders)

The system has proved to be working accurately as the GIS mapping shows readable and accurate information displays after the data has been transferred to the main project office and GIS data entry and mapping is carried out.

The FSRT is completely satisfied with both the efficient working of the field survey office and the implemented data gathering and entry system.

ANNEX 4: List of Built Assets, Dist. Multan

Form ID	Site Name	Settlement	Kind of Asset	Type of Asset	Ownership	Category of Merit			
						1	11	11*	111
2001	Shrine of Hazrat Baha-ud-Din Zakria	Multan	Shrine	Historical/Religious	Auqaf				
2002	Shah Rukn-ud-Din Alam	Multan	Shrine	Historical/Religious	Auqaf				
2003	Damdama	Multan	Building	Historical	Diistrict Govt				
2004	Bab-ul-Qasim	Multan	Gate Way	Historical	Diistrict Govt				
2005	Sawi Masjid	Multan	Mosque	Historical/Religious	FAD				
2006	Dehli Gate	Multan	Gate Way	Historical	Diistrict Govt				
2008	Khaga Shah Jalal-u-Din	Multan	Shrine	Historical/Religious	FAD				
2010	Shahi Masjid Eid Gah	Multan	Mosque	Historical/Religious	Auqaf				
2011	Hazrat Shah Shams Tabraizi	Multan	Shrine	Historical/Religious	Diistrict Govt				
2014	Darbar Mosa Pak Shaheed	Multan	Shrine	Historical/Religious	Auqaf				
2015	Sarey Sindian Wali Bagh Baji	Multan	Temple	Historical/Religious	Auqaf				
2016	Aam Khas Bagh	Multan	Garden	Historical	TMA				
2018	Peer Khassy Waly (Qadeer Abad)	Multan	Shrine	Historical	Private				
2019	Hawaili Raj Pootan	Basti Nou-Mlt	House	Historical	Private				
2021	Lange Khan Bagh	Multan	Garden	Historical	Private				
2022	Library Lange Khan	Multan	Library	Historical	Diistrict Govt				
2023	Jain Mandar Choori Saraye	Multan	Temple	Historical/Religious	Auqaf				
2024	Ghanta Ghar	Multan	Clock Tower	Historical	TMA				
2025	Jamia Masjid Hazrat Khawaja Awais	Multan	Mosque	Historical/Religious	Auqaf				
2026	Chochezai Temple	Multan	Temple	Historical/Religious	Auqaf				
2027	Peer Mohabat Shah Bukhari	Multan	Shrine	Historical/Religious	Private				
2029	Peer Shah Shakoor	Multan	Shrine	Historical/Religious	Private				
2030	Darbar Abdur Rasheed Haqani	Makhdum Rashid-Mlt	Shrine	Historical/Religious	Auqaf				
2032	Darbar Shah Machine	Khanpur Marral-Mlt	Shrine	Historical/Religious	Private				
2034	Shahi Masjid Totalaan Wali	Multan	Mosque	Historical/Religious	Private				
2036	Haqania Masjid	Multan	Mosque	Religious	Auqaf				
2037	Masjid Shah Machine	Multan	Mosque	Historical/Religious	Private				
2038	Bibi Rasti Pak Damni Darbar	Multan	Shrine	Historical/Religious	Private				
2039	Graveyard Basti Shah Machine	Multan	Graveyard	Archaeological	Private				

2041	Darbar Ghaus Mahayuddin	Multan	Shrine	Historical/Religious	Private				
2043	Mosque Chashma Bibi Pak Damini	Multan	Mosque	Religious	Private				
2044	Double Phatak	Multan	Phatak	Historical	TMA				
2046	Canal Rest House	Multan	Rest House	Historical	Diistrict Govt				
2047	Telegraph office	Multan	Office	Historical	Diistrict Govt				
2501	Jahaz Mahel	Shujabad	Palace	Historical	Diistrict Govt				
2701	Shrine of Sultan Peer Qattal	Jalalpur	Shrine	Historical	Auqaf				
2702	83/5, Marla Scheme	Jalalpur	Mound	Archaeological	Private				
2704	Hazrat Sheikh Ismail Darbar	Jalalpur	Shrine	Historical/Religious	Auqaf				
2706	Satta Sahaba	Jalalpur	Graveyard	Historical	Private				
2709	Shahi Masjid	Jalalpur	Mosque	Religious	Private				
2711	Darbar Peer Auliya	Jalalpur	Shrine	Historical/Religious	Auqaf				
2712	Mosque Kho Karari Wala	Jalalpur	Mosque	Historical/Religious	Private				
2055	Railway Station	Multan	Railway Station	Historical	Diistrict Govt				
2511	Darbaar Rasheed Shah	Shujabad	Shrine	Historical/Religious	Private				
2506	Rasheed Shah Gate	Shujabad	Gate	Historical	TMA				
2059	Darbaar Sakhi Sultan Ali Akbar	Multan	Shrine	Historical/Religious	Private				
2508	Shrine of Nawab Shuja	Shujabad	Shrine	Historical/Religious	TMA				
2509	Multani Gate	Shujabad		Religious	Private				
2514	Nadeem Raj's House	Shujabad	House	Vernacular	Private				
2056	Nishtar Hospital	Multan	Hospital	Historical	Diistrict Govt				
2512	Mandar Bagh Wala	Shujabad	Temple	Historical	Auqaf				
2515	Hawaili	Shujabad	House	Vernacular	Private				
2060	Childern Complex	Multan	Hospital	Historical	Diistrict Govt				
2510	Chotaka Gate	Shujabad	Gate Way	Historical	TMA				
2058	Civil Hospital	Multan	Hospital	Historical	Diistrict Govt				
2507	Eid Gah	Shujabad	Building	Historical	Auqaf				
2720	Peer Abdul Hadde	Jalalpur	Shrine	Historical/Religious	Auqaf				
2723	Jame Mosque Shiekh Sahab Wali	Jalalpur	Mosque	Historical/Religious	Private				
2729	Temple	Jalalpur	Temple	Historical/Religious	Auqaf				
2721	Faizul Uloom, Hafiz Wala	Jalalpur	Mosque	Religious	Private				
2730	Dera Dewan	Jalalpur	House	Vernacular	Private				
2077	Railway Station Tattaypur	Multan	Railway Staation	Historical	Diistrict Govt				
2078	Old Baradarries	Multan	Pond	Historical	Auqaf				
2079	Union Council Office	Multan	Office	Historical	Diistrict Govt				
2070	Khudakka Masjid	Multan	Mosque	Historical/Religious	Auqaf				
2072	Masjid Nawaban	Multan	Mosque	Historical/Religious	Auqaf				

	Wali								
2063	Shah Machine	Multan	Mound	Archaeological	Private				
2066	Shah Shakoor, Makhdoom Rasheed	Multan	Mound	Archaeological	Private				
2082	Patti Sarkar	Multan	Mound	Archaeological	Private				
2076	Baba Gulzar Shah	Multan	Shrine	Historical/Religious	Auqaf				
2074	Qamar Din	Rehmat Colony- Mlt	Shrine	Historical/Religious	Auqaf				
2069	Peer Maskin Shah	Multan	Shrine	Historical/Religious	Private				
2081	Hazrat Peer Masoom Shah	Multan	Shrine	Historical/Religious	Private				
2083	Al-Jilani Masjid	Multan	Mosque	Historical/Religious	Private				
2084	Kho Maqsood Wala	Multan	Mound	Archaeological	Private				
2090	Karai Baloach	Multan	Mound	Archaeological	Private				
2086	Darbar Pir Kari Wala Sarkar	Multan	Shrine	Historical/Religious	Private				
2088	Gumbad Wali Masjid	Multan	Mosque	Religious	Private				
2094	Masjid Pawaliyan Wali	Multan	Mosque	Religious	Private				
2085	Habib House	Multan	House	Vernacular	Private				
2087	Darbar Sayed Bukhari Sharif	Multan	Shrine	Historical/Religious	Private				
2092	Darbar Hazrat Sayed kamal Shah	Multan	Shrine	Historical/Religious	Private				
2093	Darbar Sheikh Mohammad Kabir	Multan	Shrine	Historical/Religious	Private				
2733	Rasheed House	Jalalpur	House	Vernacular	Private				
2736	Shabbir House	Jalalpur	House	Vernacular	TMA				
2738	Naik Muhammad	Jalalpur	House	Vernacular	TMA				
2734	Ismael House	Jalalpur	House	Vernacular	Private				
2101	Walled City	Multan	Wall	Historical	TMA				
2089	Rageelpur Masjid	Multan	Mosque	Historical/Religious	Private				
2096	Darbar Moj Darya	Multan	Shrine	Historical/Religious	Private				
2100	Nigar khana	Multan	Building	Historical	Auqaf				
2098	Kaloo Wala	Multan	Mound	Archaeological	Private				
2741	Masjid Pherana	Jalalpur	Mosque	Historical/Religious	Private				
2746	Old Mosque Umerpur	Jalalpur	Mosque	Historical/Religious	Private				
2113	Haram Gate	Multan	Mosque	Historical	Diistrict Govt				
2521	Suresh Chand House	Shujabad	Building	Historical	Private				
2522	Mandar Jinnah Colony	Shujabad	Temple	Historical/Religious	Private				
2760	Madrasa Arbia	Jalalpur	Madrasa	Historical/Religious	Private				
2759	Masjid Mehriya	Jalalpur	Mosque	Historical/Religious	Private				
2757	Tahir House	Jalalpur	House	Vernacular	Private				
2751	Bangla Dewan	Jalalpur	House	Vernacular	Private				
2126	Lakhi Wala	Multan	Mound	Archaeological	Private				
2130	Akbar Shah Tomb	Multan	Tomb	Historical	Private				
2131	Akbria Masjid	Multan	Mosque	Historical/Religious	Private				

2526	Darbar Peer Mehbob Shah	Shujabad	Shrine	Historical/Religious	Private				
2538	Masjid Noori Wali	Shujabad	Mosque	Historical/Religious	Private				

Tehsil Multan-Mlt;Tehsil Shujabad-Shjb;Tehsil Jalalpur Pir Wala -Jpw

ANNEX 5: List of Built Assets, Dist. Bahawalpur

Form ID	Site Name	Settlement	Kind of Asset	Type of Asset	Ownership	Category			
						1	11	11*	111
1	Thull	Abbas Nagar - Bhp	Watch Tower	Archaeological	Private				
2	Tomb of Bahawal Haleem	Uch Sharif-AP	Tomb	Historical	Fed. Archaeology				
3	Nooria	Uch Sharif-AP	Tomb	Historical	Fed. Archaeology				
4	Tomb of Bibi Jawindi	Uch Sharif-AP	Tomb	Historical	Auqaf				
5	Vernacular House	Uch Sharif-AP	House	Vernacular	Private				
6	Ubaidia Masjid	Mohallah Jomani-Kpt	Mosque	Historical/Religious	Private				
7	Khanan Wali Masjid	Mohallah Gaggrah-Kpt	Mosque	Historical/Religious	Private				
8	Khawaja Khuda Baksh	Mohallah Jomani-Kpt	Shrine	Historical/Religious	Auqaf				
9	Hindeera of Ashraf Beig	Jawan Peer-Kpt	Tomb	Historical	Private				
10	Hindeera of Imam Shah	Jawan Peer-Kpt	Tomb	Historical	Private				
11	Hindeera of Khuda Yar	Jawan Peer-Kpt	Tomb	Historical	Private				
12	Hindeera of Abbasi Family	Jawan Peer-Kpt	Tomb	Historical	Private				
13	Mari Khanan Wali	Bheli-Kpt	House	Vernacular	Private				
14	Al-Madina Masjid	Behli-Kpt	Mosque	Historical/Religious	Private				
16	Fazaluddin Ladla	Uch Sharif-AP	Shrine	Historical/Religious	Auqaf				
17	Ram Ram Well	Uch Sharif-AP	Well	Historical	Private				
18	Jalal Qutab Kmal	Uch Sharif-AP	Shrine	Historical/Religious	Auqaf				
20	Khoh Chader	Basti Maghera-Kpt	Well	Historical	Private				
21	Shrine of Aaqil Shah	Aaqil Shah-Kpt	Shrine	Historical/Religious	Private				
22	Shrine of Ahmed Sher	Syed Imam Shah-Kpt	Shrine	Historical/Religious	Private				
23	Peer Gareeb Shah	Syed Imam Shah-Kpt	Shrine	Historical/Religious	Auqaf				
28	Jame Masjid Habib Shah	Tibi Sohagen-Bhp	Mosque	Historical/Religious	Private				
29	Jamil House	Tibi Sohagen-Bhp	Building	Vernacular	Private				
30	Habib Shah	Tibi Sohagen-Bhp	Shrine	Historical/Religious	Private				
33	Thull	Hasilpur-Hsp	Mound	Archaeological	Private				
34	Rangeela Shah	Gareeb Mehala-Hsp	Shrine	Religious	Auqaf				
38	Tiba Chip Wala	Darawar Fort-Yzm	Mound	Archaeological	Private				

	Alsadiq								
1007	Sadiq Dain High School	Bahawalpur	School	Historical	Punjab Education				
1008	Masjid Sodagar Wali	Bahawalpur	Mosque	Historical/Religious	Auqaf				
1010	Rana ka Bhana	Bahawalpur	House	Historical	Private				
1015	Garib Shah	Riaz Abad-Bhp	Shrine	Historical/Religious	Auqaf				
1019	Jamal Dervesh	Uch Sharif-AP	Shrine	Historical	Auqaf				
1024	Noor Muhammad House	Mohalla Shadran-Bhp	House	Historical	Private				
1042	Mian Sher Factory	Hasilpur	Buliding	Historical	Private				
1046	Tiba Kalian Paran	Kalian Paran-Yzm	Mound	Archaeological	Private				
1047	Masjid Mughlan	Uch Sharif-AP	Mosque	Historical/Religious	Private				
1048	College Wala Tibba	Uch Sharif-AP	Mound	Archaeological	Private				
1055	Jame Masjid Haidria	Pipli Rajan Qattal-AP	Mosque	Historical/Religious	Private				
1056	KalianParan Khoo	Moj Garh-Yzm	Well	Historical	Private				
1064	Sui Vihar Stupa	Khanqah, Bwp	Stupa	Historical/Religious	Private				
1068	Badshahi Masjid	Derawar Fort-Yzm	Mosque	Historical/Religious	Private				
1070	Peer Jume Shah	Basti Luqman-Bhp	Shrine	Historical/Religious	Private				
1071	Old Railway Station	Samma Satta -Bhp	Station	Historical/Religious	Private				
1072	Purani Bethak	Dera Masti-Bhp	House	Vernacular	Private				
1081	Masjid-i- Aqsa	Bahawalpur	Mosque	Historical/Religious	Private				
1079	Old House	Bahwalpur	House	Vernacular	Private				
1076	Chbotra Bazaar	AP	Market	Vernacular	Private				
1073	Sher Shah	AP	Shrine	Historical/Religious	Private				
51	Moj Garh Mosque	Moj Garh-Yzm	Mosque	Historical/Religious	Private				
54	Moj Garh Fort	Moj Garh-Yzm	Fort	Historical	Private				
55	Nawab Maroof Khan tomb	Moj Garh-Yzm	Tomb	Historical	Private				
56	Qalander Shah Tomb	Hasilpur	Tomb	Historical	Private				
66	Derawer Fort	Derawer-Yzm	Fort	Historical	Private				
72	Derwer Graveyard	Derawer-Yzm	Graveyard	Historical/Religious	Private				
71	Bandel Shah Tomb	Ap	Tomb	Historical	Private				
72	Nagan Wala Mander	Ap	Temple	Historical/Religious	Private				
74	Railway Station	Mubarkpur-Bwp	Railway Station	Historical	Punjab Govt				
75	Shah Mahmood Shrine	Mubarkpur-Bwp	Shrine	Historical	Private				
76	Ghaipur Fort	Kpt	Fort	Historical	Private				
77	Masjid Gulzare Madian	Kpt	Mosque	Historical/Religious	Private				

78	Masjid Gudkain	Kpt	Mosque	Historical/Religious	Private				
79	Peer Bader Shah Shrine	Kpt	Shrine	Historical/Religious	Private				
80	Thull	Kpt	Watching Tower	Archaeological	Private				
81	Bhorey Shah Shrine	Kpt	Shrine	Historical/Religious	Private				
82	Marot Fort	Fortabbas	Fort	Historical/Religious	Private				
548	Thana Moj Garh	Moj Garh-Yzm	Thana	Historical	Private				
551	Noor Mahal	Bwp	Palace	Historical	Private				
552	Farid Gate	Bwp	Gate	Historical	TMA				
553	Shamas Masjid	Hasilpur	Mosque	Historical/Religious	Private				
555	Darbar Mahal	Bwp	Palace	Historical	Private				
560	Khawaja Hakeem Serani	Khangarh-Bwp	Shrine	Historical/Religious	Private				
565	9, Wali Ther	Head Rajkan-Yzm	Mound	Archaeological	Private				
566	Hakeem Khakwani Tomb	Ap	Tomb	Historical	Private				
568	Al-Sadiq Masjid	Bahwalpur	Mosque	Historical/Religious	Private				
572	old School	Bahwalpur	School	Historical	Private				
1084	Chachran Mosque	Yazman	Mosque	Historical/Religious	Private				
1085	Nawan Kot Fort	Yazman	Fort	Historical	Private				
1086	Bijnot Fort	Yazman	Fort	Historical	Private				
1087	Khan Garh	Yazman	Mound	Archaeological	Private				
1088	Khan Garh Fort	Yazman	Fort	Archaeological	Private				
1089	Rukanpur Mound	Yazman	Mound	Archaeological	Private				
1090	Rukanpur Mosque	Yazman	Mosque	Historical/Religious	Private				
1091	Rukanpur Fort	Yazman	Fort	Historical	Private				
1092	Dhari Watt Tibba	Yazman	Mound	Archaeological	Private				
1093	Kharambi	Yazman	Mound	Archaeological	Private				
1094	Jhari Wala	Yazman	Mound	Archaeological	Private				
1095	Khar,ri	Yazman	Mound	Archaeological	Private				
1096	Kasai wala	Yazman	Mound	Archaeological	Private				
1097	Kane wala Tibba	Yazman	Mound	Archaeological	Private				
1098	Camp wali Dahar	Yazman	Mound	Archaeological	Private				
1099	Kothi thal	Yazman	Mound	Archaeological	Private				

Tehsil Ahmedpur- Ap; Tehsil Bahawalpur- Bwp;Tehsil Hasalpur -Hsp,Tehsil Khairpur Tame Wali -Kpt;Tehsil Yazman -Yzm

LISTING CRITERIA

Identification Criteria for Listing of Built Assets

The formulated identification criterion is mainly based on the categories of the Antiquities Act, 1975, with an added conceptual support from the documents consulted.

Category- I

Monuments and archaeological sites, urban/rural heritage structures or precincts/premises either protected on unprotected, which from their present condition symbolize unique values, like historic, architectural, archaeological, cultural or artistic, any one or all together. These can be monuments and sites which should

be maintained in permanent good repair due to their outstanding, unique and authentic architectural or historic interest.

Category- II*

Monuments and Archaeological sites, urban/rural heritage structures or precincts/premises which possess undiscovered values and significance of both architectural and historic interest. These can be either explored or unexplored archaeological mound or those mounds, as yet unlisted heritage structures on which surface collection has been carried out but are of sufficient significance to require preserving in their present state and safeguarded against further deterioration.

Category- II

Monuments and Archaeological sites, urban/rural heritage structures or precincts/premises unprotected, for which it has only become recently possible or desirable to be restored and conserved from further decay by 'early preventive conservation' such as the eradication of vegetation , protection from water seepage from walls and foundation, contextual stabilization and general maintenance. These can be monuments which are particularly significantly both architecturally and historically and signify more than a local interest or are valued by the community as significant assets.

Category- III

Monuments and archaeological sites, urban/rural heritage or precincts/premises of lesser importance for which preservation and conservation has either become impossible or unnecessary due to their advanced state of decay, or inappropriate interventions which have damaged irrevocably their authenticity. These should be documented at the minimum.

Annex 7

TABLE SHOWING THE EXISTING CRAFT KNOWLEDGE IN A SELECTION OF VILLAGES MAPPED IN DISTRICT MULTAN & BWP

S	Form ID	Type of Asset	Settlement	Kind of Asset	Classified by Gender of Craft person	Category of Merit			Prevalence
						1 (Unique)	11 (High-Low Quality)	Endangered	
DISTRICT BAHAWALPUR									
1	19	Shoe Making	KPT(Behli)	Khussa Making	Men				Limited
		Textile	KPT(Behli)	Embroidery	Women				High
		Palm Leaf	KPT(Behli)	'Changer" Making	Women				High
		Pottery	KPT(Behli)	'Ghara" making	Men				Limited
2	24	Shoe Making	KPT(City)	Khussa Making	Men				Limited
		Textile	KPT(City)	'Chunri " Work	Women+ Men				Medium
		Pottery	KPT(City)	'Matkas"making	Men				Limited
		Textile	KPT(City)	Block Printing	Women+ Men				Medium
		Textile	KPT(City)	'Khais" Making	Men				Limited
		Souvenir	KPT(City)	Decoration Piece	Women+ Men				Medium
3	26	Textile	Yazman	Embroidery	Women				High
DISTRICT MULTAN									
4	2703	Shoe Making	Jalalpur(Umerpur)	Khussa Making	Women+ Men				High
5	2705	Shoe Making	Jalalpur(Basti Ismaeel))	Khussa Making	Women+ Men				Medium
6	2707	Textile	Jalalpur(Basti Phirana)	Embroidery	Women				High
7	2710	Textile	Jalalpur(Basti Khuda Baksh)	Embroidery	Women				High
		Shoe Making	Jalalpur(Basti Khuda Baksh)	Khussa Making	Men				High
8	2713	Shoe Making	Jalalpur(Khan Bela)	Khussa Making	Men				High
		Textile	Jalalpur(Khan Bela)	Embroidery	Women				High
9	2714	Palm Leaf	Jalalpur(Khan Bela)	'Changer" making	Women				High
10	2715	Pottery	Jalalpur(Mohalla Siddiqiya)	'Matkas" making	Men				Medium
11	2716	Textile	Jalalpur(Mohalla Gareb Shah)	Embroidery	Women+ Men				Medium
12	2717	Textile	Jalalpur(Basti Bandran)	Embroidery	Women+ Men				Medium
		Palm Leaf	Jalalpur(Basti Bandran)	'Changer" making	Women				High
		Palm Leaf	Jalalpur(Basti Bandran)	Basket making	Women				High
13	2718	Textile	Jalalpur(Basti Misran Wali)	'Rilli" making	Women				Limited

14	2740	Textile	Jalalpur(Meer Kot)	Embroidery	Women+ Men				High
		Palm Leaf	Jalalpur(Meer Kot)	Embroidery	Women+ Men				High
		Shoe Making	Jalalpur(Meer Kot)	Khussa Making	Women+ Men				Limited
15	2749	Souvenir	Jalalpur(Mochi Penhon)	Decoration Piece	Women+ Men				Limited
16	2007	Palm Leaf	Multan(Nawabpur)	Basket making	Women+ Men				Limited
		Textile	Multan(Nawabpur)	Embroidery	Women+ Men				High
		Shoe Making	Multan(Nawabpur)	Khussa Making	Men				Medium
17	2012	Textile	Multan(Mohammadi Mohalla)	Embroidery	Women+ Men				High
18	2013	Textile	Multan(Aminabad)	Embroidery	Women+ Men				High
		Palm Leaf	Multan(Aminabad)	Basket making	Women+ Men				High
		Shoe Making	Multan(Aminabad)	Khussa Making	Men				High
		Souvenir	Multan(Aminabad)	Decoration Piece	Women+ Men				Limited
19	2031	Textile	Multan(Bohar Gate)	Embroidery	Women+ Men				High
20	2033	Textile	Multan(Makhdoom Rasheed)	Embroidery	Women+ Men				High
		Palm Leaf	Multan(Makhdoom Rasheed)	Basket making	Women+ Men				High
		Shoe Making	Multan(Makhdoom Rasheed)	Khussa Making	Men				High
21	2033	Textile	Multan(Ahata)	Embroidery	Women+ Men				High
		Palm Leaf	Multan(Ahata)	Basket Making	Men				Limited
22	2065	Textile	Multan(Gillani Bazaar)	Embroidery	Women+ Men				High
		Textile	Multan(Gillani Bazaar)	'Chunri" Work	Women+ Men				Limited
Example of Information which can be drawn and Analyzed from GIS Database									